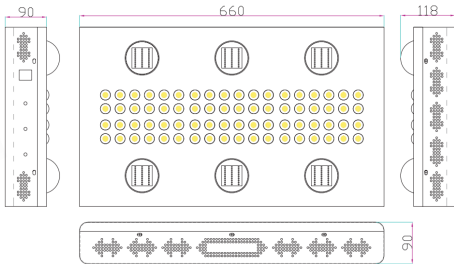


Features:

- Perfect of high power 6pcs 90 W COB and 72pcs 5w chips.
- Full spectrum , ideal for seedling to harvest growth .
- Reliable cooling fans heavy duty aluminum heatsink for best cooling ,no additional ventilation systems needed .
- Secondary lenses for higher PAR value and greater penetration .
- 3 dimmers adjust the intensity and spectrum for different plants and growing stage .
- High temperature protection ,lights turn off when internal temperatures reaches 60c .
- Automatic voltage regulation: 100 – 265 volts.
- 50000 hours rating .



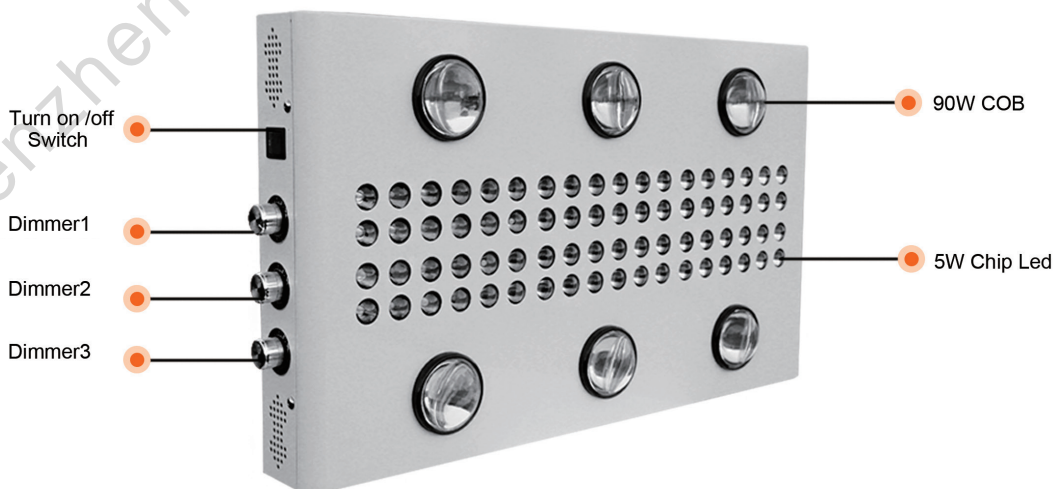
The dimension of Noah 6S

Noah 6S

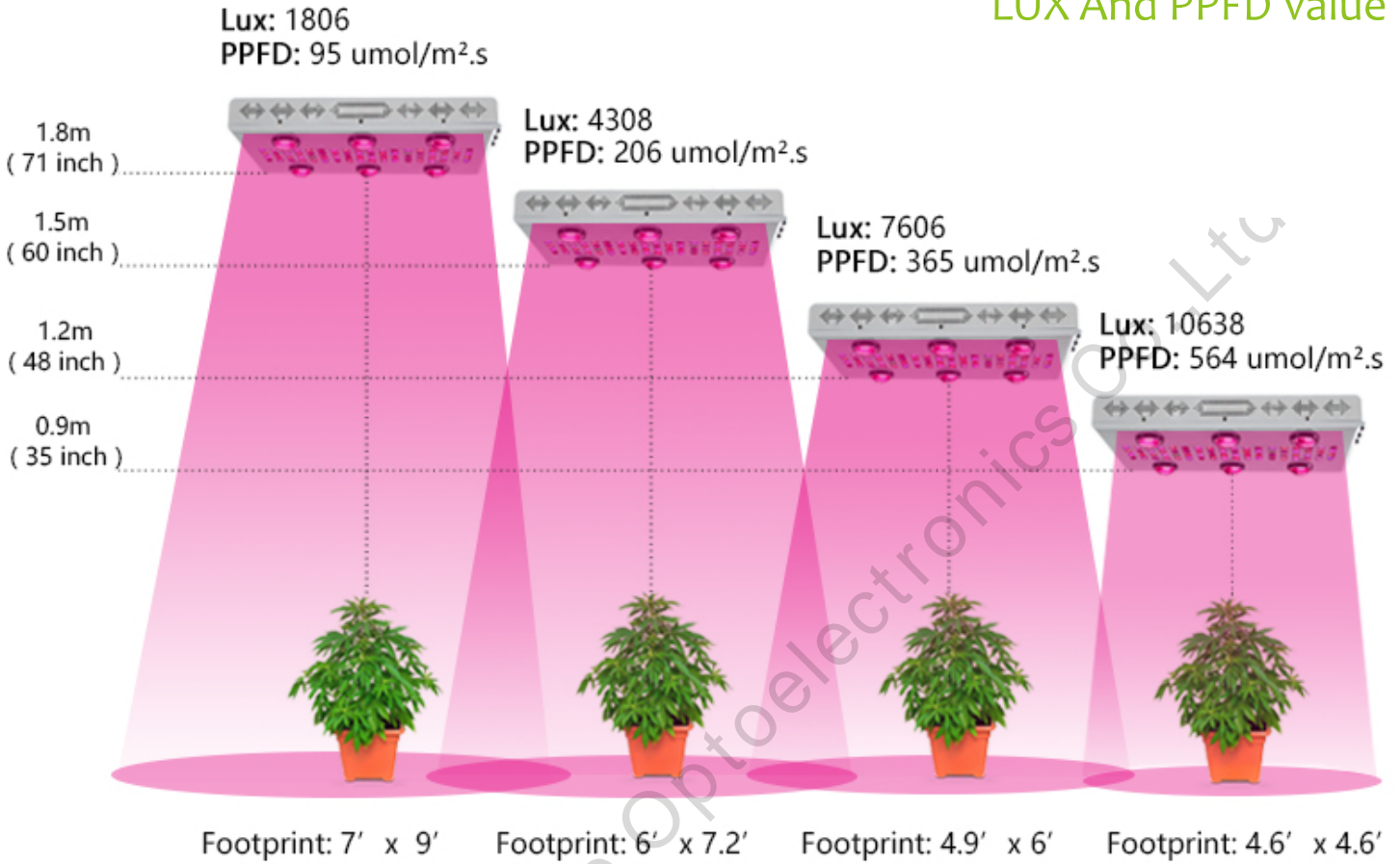
Specifications :

MX-NOAH6S-900W

| | |
|---------------|-------------------------------|
| Power | 900W |
| Voltage | AC85-265V |
| LED Qty | 72pcs/5W 6pcs/COB90W |
| Lumen | 15400Lm |
| Wavelength | Red: Blue: OrangeWhite: UV:IR |
| Angle of leds | 90°-120° |
| Lighting Area | 2.5m ² |
| Size | 660X385X118mm |
| N.W | 11.4kg |



LUX And PPFd Value



3 Dimmers

